



eXuberance

embroidery software *Junior*

QUICK START GUIDE

Introduction

Welcome to the creative universe of elna eXuberance embroidery software!

Your eXuberance *Junior* offers a next generation working environment, combining an innovative design, 3D integration, intuitive usability and stunning embroidery quality.

As a result, you will be able to create your embroidery designs with minimal effort and time investment. The best way to fully enjoy your creative projects!

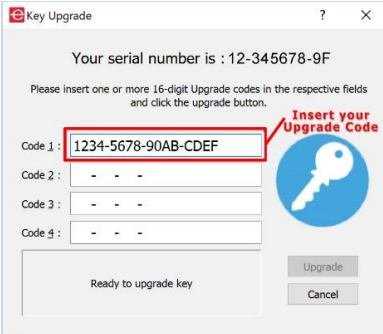
Total compatibility with both MS Windows® and Mac OS® platforms gives you the greatest flexibility.



Upgrading from Jr to Full version

Upgrading from elna eXuberance *Junior* to the Full version of the software is a simple process which only requires the inputting of an Upgrade Code. Please follow the instructions below and you will soon be enjoying the increased functionality and additional features that the Full version of eXuberance offers.

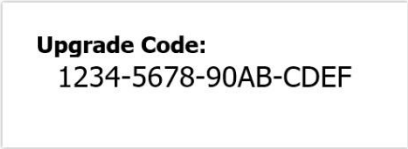
1. Open your eXuberance *Junior* software.
2. From the Help menu at the top of the screen, select the Key upgrade... option.
3. The Key upgrade dialog will appear.



The screenshot shows a dialog box titled "Key Upgrade" with a red icon in the top-left corner. The window has standard OS controls (minimize, maximize, close) in the top-right. The main text reads: "Your serial number is : 12-345678-9F". Below this, it says: "Please insert one or more 16-digit Upgrade codes in the respective fields and click the upgrade button." There are four input fields labeled "Code 1:", "Code 2:", "Code 3:", and "Code 4:". The "Code 1:" field contains the text "1234-5678-90AB-CDEF" and is highlighted with a red rectangular box. To the right of the input fields is a blue circular icon of a key with the text "Insert your Upgrade Code" in red above it. At the bottom of the dialog, there is a large button labeled "Ready to upgrade key" and two smaller buttons labeled "Upgrade" and "Cancel".

4. Input the 16-character Upgrade Code that is displayed on a sticker on the inside of your Upgrade kit DVD case (including the hyphens).

Example:



Upgrade Code:
1234-5678-90AB-CDEF

5. Make sure you are connected to the internet and click the Upgrade button.
6. At the bottom of the dialog screen, a message will appear informing you that your key was successfully upgraded.

Note: It is only necessary to enter/use the Upgrade Code once. After this, your key will be recognized as a Full version key on any other devices you have eXuberance installed on as long as you are connected to the Internet.

Installing the software

The software can be installed on MS Windows and MAC OS systems. Depending on the system, select the respective installation method.

If your computer does not have a DVD-Rom drive, you can download the Windows and Mac installation file from the Elna website from the following webpage:

<http://software.elna.com>

MS Windows installation

Insert the elna eXuberance Jr installation DVD into your DVD-ROM drive. It is recommended that you close all running programs before you proceed.

If your computer does not have the DVD-ROM AUTORUN feature activated, open Windows Explorer and from the DVD-ROM drive run the setup.exe program.

If you have a link to download the installation file, you can type it in any web browser's URL field and download the file. Extract the installation file from the downloaded zip file by right clicking on it and selecting Extract All... Follow the instructions to extract the installation file, then go to that folder and run the file by double clicking on it.

If you are running the installation on a Windows 7/ 8.1/10 operating system a Security screen will appear with information about the new software and it will ask you if you allow it to be executed. You need to either log in as administrator or select Allow if you are already logged in as administrator.

1. If applicable, keep your Hardware USB Key and cutter unplugged during the installation of the software. Click Next> to continue.
2. When the window with the License Agreement opens:
Click on the first radio button of the window, confirming that you accept the terms of the license agreement. (CAUTION! PLEASE READ THE TERMS & CONDITIONS OF THE LICENSE AGREEMENT CAREFULLY). Then click the Next> button.
3. At the next dialog, you can specify where you want the software to be installed. You can change the Installation Folder by clicking on the Browse... button and selecting another directory. Click Next > to continue.
4. At the next dialog, you can select which software components you want to be installed. By default, all components will be installed. Uncheck those you do not require. Click Next> to continue.
5. At the next dialog you can select how the software will handle the various embroidery design formats. Select if you want to open only Draw file formats or all embroidery file formats. Click "Next>" to continue.
6. The software is now ready to install. Click Install to begin. During the installation, you can click the Show details button to view the installation process.
7. During the installation process, multiple dialogs might appear requesting access to install embroidery machine drivers. Click Install to continue.

8. At the end of the process, you will be informed that the installation is complete. Click Next > to continue.

Now elna eXuberance Jr software is installed on your computer. To run the software, open the Windows Start menu, click on All Programs > eXuberance and then click on eXuberance 1.5.

MAC OS installation

Insert the elna eXuberance installation DVD into your DVD-ROM drive. It is recommended that you close all running programs before you proceed. The installation will start automatically.

You can also, download the installation file from the following webpage:

<http://software.elna.com>

Extract the installation file from the downloaded zip file by double clicking on it. Then open the folder that will appear and run the file by double clicking on it.


1. On the Dock area you can see the download progress.
2. Once the download is complete, the download icon will change.
3. If you click on the Downloads icon, then a list with the latest downloaded files appears on top. Click on the eXuberance.dmg file.
4. The file you 've downloaded is a disk image and by clicking on eXuberance.dmg it is mounted onto your Mac and you can see its

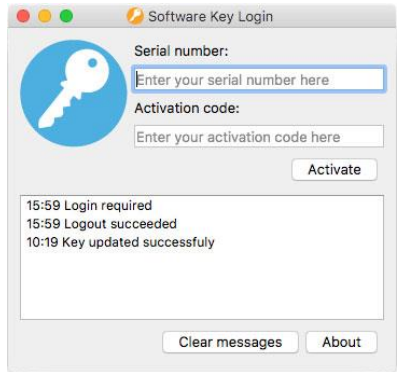
contents. On your desktop, there is an icon for the mounted disk image. If you accidentally close the Finder window, you can start again by double clicking the eXuberance icon on your desktop.

5. To perform the installation of eXuberance you must drag the icon onto the Applications folder icon that you can see.
Drag the eXuberance application onto the applications folder icon.
Notice: Do not double click on the icons because this will run the program through the mounted media and it will not be installed.
6. Installation is complete, and at this point you can Eject the installation media. Right click on eXuberance on your Desktop and use Eject option.
7. To Run the software, start Finder, navigate to Applications folder and locate the eXuberance icon.
8. The Software key login window will appear. Now you need to type the Serial number and the Activation code into the respective fields. To proceed with the activation, you need to be connected to the internet. After typing the key and activation code press eXuberance.
9. After successful activation, you get a message Key updated successfully.
10. Now you are ready to start eXuberance, go to Applications folder and locate the eXuberance icon. Double click on this icon to start the software.
11. The End-User License Agreement dialog will appear. Click on the first button, confirming that you accept the terms of the license agreement. (CAUTION! PLEASE READ THE TERMS & CONDITIONS OF THE LICENSE AGREEMENT CAREFULLY). Then click the OK button.
12. You are ready to use the elna eXuberance software.

Software key

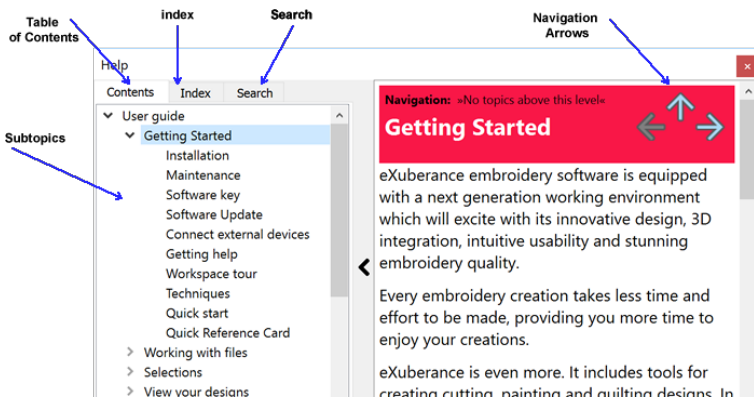
Together with the software you will get a software key that consists of a Serial number and an Activation code. These two numbers can be found in the packaging of the software and they must be inserted in the respective fields of the Software key tool.

The Software key tool  is installed together with the software and can be found at the bottom right corner of the task bar on MS windows (next to the antivirus) and at the top right corner of the MAC's Menu bar. The icon color will vary, based on its status. To activate the Software key, you have to insert the Serial number and the respective Activation code.



Getting Help

You can find the User guide, at the Help menu of the software. It is called Help topics and you can access it by pressing F1 shortcut key.



- **Table of contents:** allows you to see all the information organized by subject. Click top-level entries to view subtopics.
- **Index:** allows you to look up specific terms or concepts in alphabetical order. Type in a word or phrase.
- **Search:** lets you search the full text of the Help for a particular word or phrase

The same manual is included in pdf file format and can be accessed from:

MS Windows: select **Help > Printable Help**

MAC OS: select menu **Help > Printable Help**

OR **online** from the following webpage:

<http://software.ena.com>

Another help resource is the "Show help on" that can be also accessed from the "Help" menu or by pressing the "Shift+F1" shortcut key.

- **Show help on:** can provide help for a specific tool, area, or function. When you activate "Show help on", the mouse pointer turns to a pointer with a question mark. Click on any function you want in Show help on and the subject will be displayed.

Finally, "tooltips" provide helpful information about application controls when you position the pointer over icons, buttons, and other user interface elements.

Getting Started

After installing the software, you are now ready to create your first design. This section contains a quick overview of the software's features and how you can use them to create your first designs.



elna eXuberance *Junior* is a user-friendly software that anyone can learn easily. Spend some time to reading the software's instructions and you will realize how easily and quickly you can create complete designs.

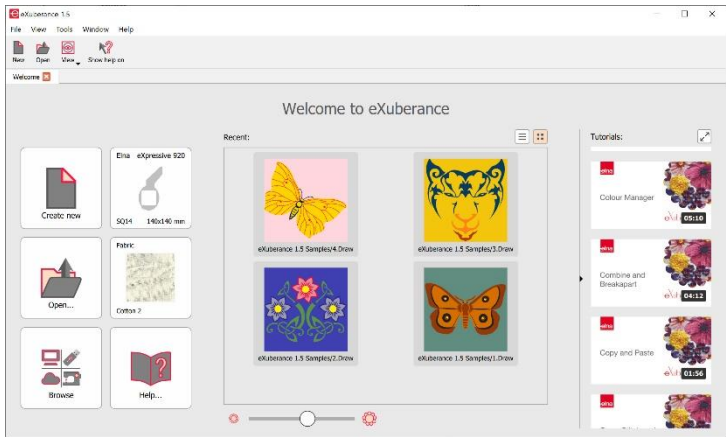
Welcome page

Whenever you open the software the Welcome screen appears. From here you can select what to do in the software. You can Create new designs, Open existing, launch the design Browser, set the default Fabric and Hoop and view training video Tutorials.

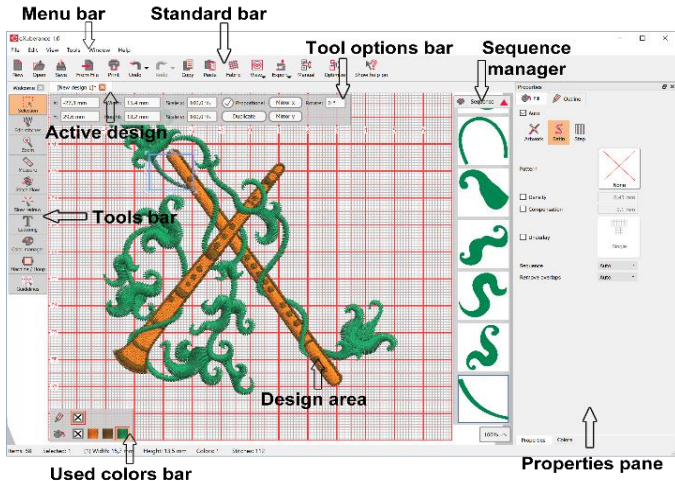
Click on any of the sample designs in the Recent designs list to open.

Workspace

The main application window consists of a variety of menus, toolbars, wizards and dialog windows. All these together with the design tabs are called a workspace. The way that the workspace components and windows are placed is fully customizable. When opening the application for the first time all these tools are placed by default in a way to help you focus on your task (creating, editing and viewing designs).



Make any arrangement on workspace components in order to have a workspace that matches your personal preferences.



Quick Reference Card

General		
	MS Windows	MAC OS
New document	Ctrl+N	Cmd+N
Open document	Ctrl+O	Cmd+O
Save document	Ctrl+S	Cmd+S
Save As document	Ctrl+Shift+S	Cmd+Shift+S
Print document	Ctrl+P	Cmd+P
Export to image	Ctrl+Shift+E	Cmd+Shift+E
Export to SVG	Ctrl+Alt+E	Cmd+Alt+E
Help	F1	F1
Show Help on...	Shift+F1	Shift+F1

Selection		
	MS Windows	MAC OS
Select all	Ctrl+A	Cmd+A
Invert selection	Ctrl+Shift+I	Cmd+Shift+I
Top object	Ctrl+Home	Cmd+Home
Bottom object	Ctrl+End	Cmd+End
Next object	Tab	Tab
Previous object	Shift+Tab	Shift+Tab

Modifications		
	MS Windows	MAC OS
Undo	Ctrl+Z	Cmd+Z
Redo	Ctrl+Shift+Z	Cmd+Shift+Z
Select fabric	Ctrl+F	Cmd+F
Options	Ctrl+T	Cmd+T
Optimizer options	Ctrl+Shift+J	Cmd+Shift+J
Repeat last transform	Ctrl+R	Cmd+R
Group	Ctrl+G	Cmd+G
Ungroup	Ctrl+U	Cmd+U
Combine	Ctrl+L	Cmd+L
Break apart	Ctrl+K	Cmd+K
Convert to curves	Ctrl+Q	Cmd+Q
To front one	PgUp	PgUp
To back one	PgDn	PgDn
To front of design	End	End
To back of design	Home	Home
Directions	Ctrl+Shift+D	Ctrl+Shift+D
Divide	Shift+D	Shift+D
Edit Stitches		
	MS Windows	MAC OS
Insert stitches	Enter	Return
Delete stitches	Backspace	Backspace

Designing		
	MS Windows	MAC OS
Insert symbol	Ctrl+F11	Ctrl+F11
Delete objects	Delete	Delete
Text	F8	F8

View		
	MS Windows	MAC OS
Properties	Alt+Enter	Alt+Enter
Zoom in	Z	Z
Zoom previous	F3	F3
Zoom all	Shift + F4	Shift + F4
Zoom design	F4	F4
Hand tool (pan)	H	H
Measure	F9	F9

Backdrop		
	MS Windows	MAC OS
Hide	Alt+1	Alt+1
Below Embroidery	Alt+2	Alt+2
Edge enhance	Alt+3	Alt+3
Above embroidery	Alt+4	Alt+4

crafted with love

www.elna.com